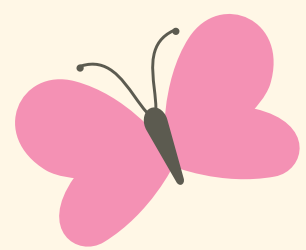


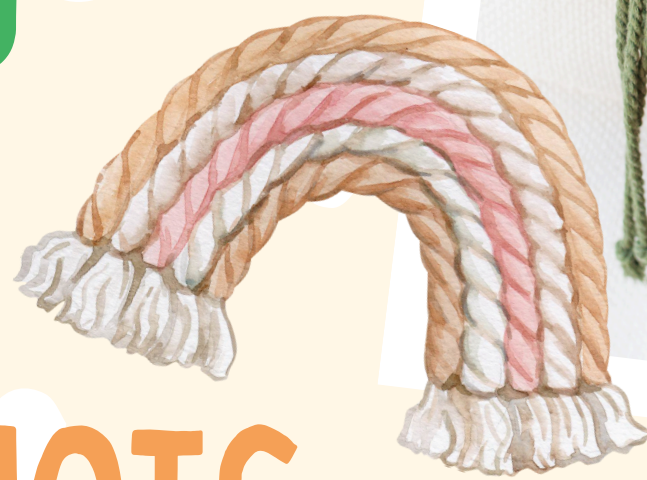


BE BOLD. Shape the Future.
**College of Agricultural, Consumer
and Environmental Sciences**
Cooperative Extension Service
Extension 4-H Youth Development
Valencia County Extension Office

4-H MACRAME FUN



MACRAME UNIT 1 SQUARE & H HITCH KNOTS



REGISTRATION
FREE

Join us for a fun and creative journey into macrame! This hands-on series is perfect for youth (ages 10-18) wanting to learn the basics of macrame.

Make a fox, bee or flamingo hanging

Monday, June 16 & 30

10:00 a.m. - 12:00pm

Valencia County CES Office
404 Courthouse Road

To RSVP call 505-565-3002 by
Wednesday, May 21, 2025. Space is Limited.



NEW MEXICO STATE UNIVERSITY IS AN EQUAL OPPORTUNITY EMPLOYER. ALL PROGRAMS ARE AVAILABLE TO EVERYONE REGARDLESS OF AGE, COLOR, DISABILITY, GENDER, NATIONAL ORIGIN, RACE, RELIGION, SEXUAL ORIENTATION OR VETERAN STATUS. NMSU AND THE USDA COOPERATING. IF YOU ARE AN INDIVIDUAL WITH A DISABILITY AND NEED AUXILIARY AID, PLEASE CONTACT CRYSTAL ANAYA AT 505.565.3002 TWO WEEKS IN ADVANCE.