

Curtain and Window Treatments





Banner Valance

A series of fabric triangles attached to a mounting board or threaded on a rod.



Café Curtains

Short curtains hung on a rod.



Casing

A fabric pocket to encase a curtain rod or elastic for gathering. Usually made by folding fabric over twice and stitching basically, a hem with open ends.



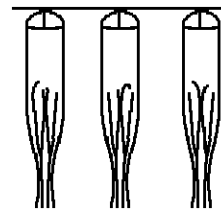
Cornice

An ornamental band for covering a curtain rod. It is made of a rigid panel covered with fabric.



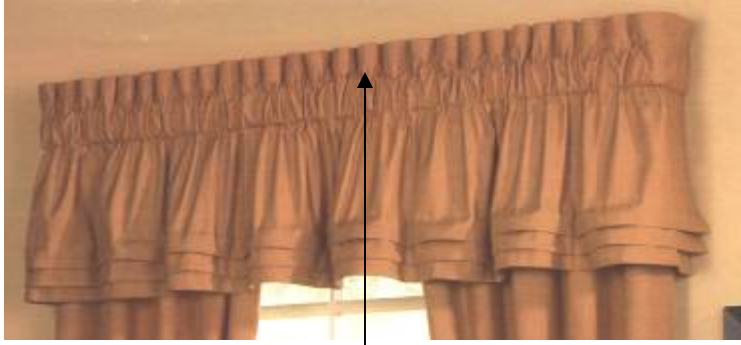
Curtain Drop

The length of a curtain window treatment from the hanging system to the bottom edge.



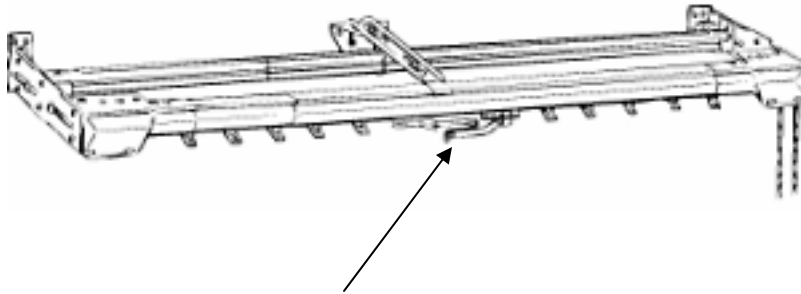
Goblet Pleats

A pleat that is pushed out and filled with curtain lining instead of folded inward.



Header

The extra fabric above the curtain rod pocket



Leading Edge

Where the curtain panels overlap in the center of a way traverse rod.



Piping

A decorative edge made from bias-cut fabric strips that cover a cord.

Roman Shade

A window shade made from fabric that hangs flat when down but folds like an accordion when raised.





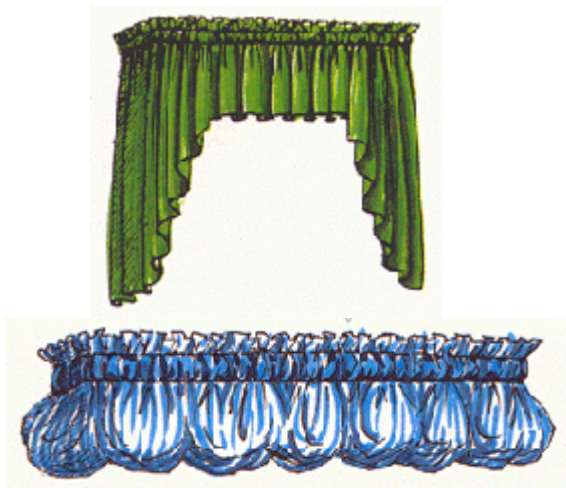
Sconce

A wall mounted fixture that is great for draping fabric through



Spring Tension Rod

An adjustable rod that fits inside the window frame



Valance

A top window treatment that can stand-alone or be mounted over curtains



Material



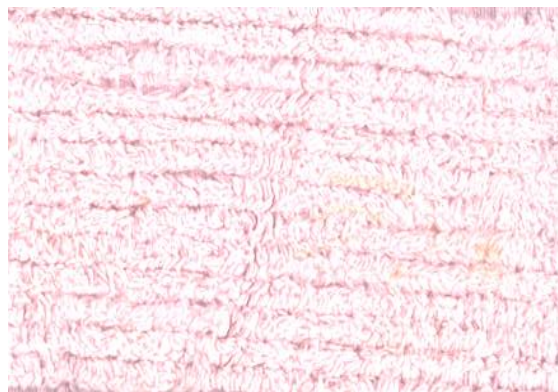
Brocade

A rich fabric with an embossed design, usually gold or silver



Bump

Cotton lining added to curtain panels to add body to a curtain



Chenille

A very soft fabric made with fluffy cotton yarns



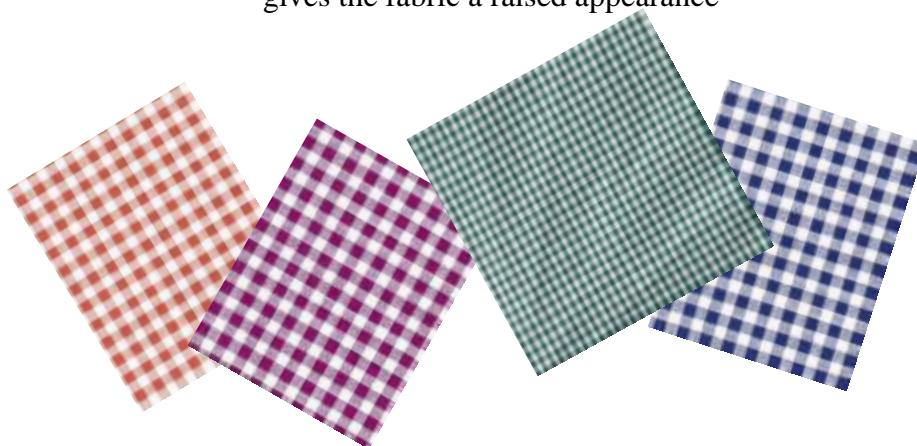
Chintz

A floral printed cotton fabric



Damask

A woven fabric made from wool, silk, or cotton. The special weave gives the fabric a raised appearance



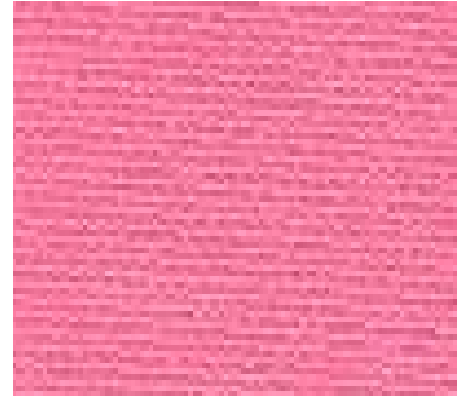
Gingham

Plain weave cotton cloth with a checked pattern



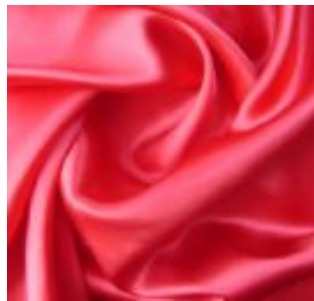
Interlining

A soft fabric placed between the fabric and the lining that provides insulation



Lining

Fabric layer placed on the back of curtains to protect them from light and dust.



Silk

A very strong, yet soft fabric, made from threads produced by silkworms



Tapestry

Machine woven fabric that looks hand woven



Windows



Bay Window

A Three sided or more window that protrudes from the exterior wall of a house



Bow Window

Bay windows that are semi-circular



Casement Window

A hinged window operated by a crank mechanism that can open in or out

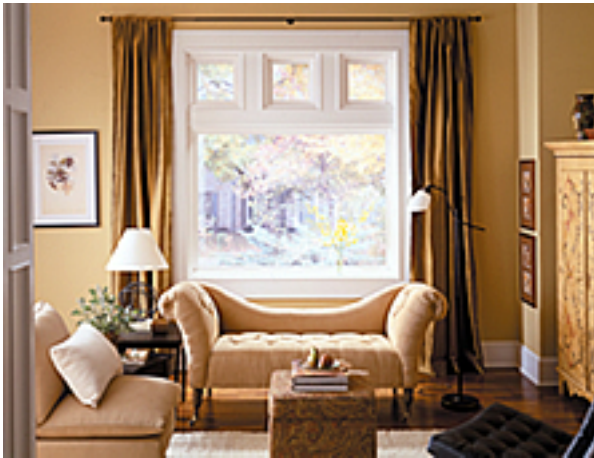
Double Hung Window

The most common type of window, consisting of an upper and lower sash



Palladian Window

A series of windows with an arch on top



Picture Window

A large window with fixed panes



Recessed Window

A Window set back into a wall. Curtain window treatments are often hung inside the recess.



Carpeting





Berber Carpet

Has looped pile running in parallel lines, a construction that is exceptionally durable and stain-resistant. Its rugged loop surface creates a wool-like appearance while also hiding footprints and other tracks.



Cable Carpet

Soft, heavy yarns with lots of twist and a casual look. Good for medium traffic areas, cable is synonymous with comfortable, casual living.



Cut Pile

The loop is cut at the top, leaving tufts of yarn that stand straight up



Loop-Pile

Individual strands of yarn are pulled through the backing twice to create a small loop



Shag

The retro look from the 1960's is back in both practical and psychedelic styles. Shag uses a longer tuft and a thicker yarn. Creates a casual atmosphere in a family room or child's bedroom.

Sisal

Twisted synthetic yarns that imitate the hardy, woven grass feel of aboriginal crafts. Tighter than Berbers, with a stiff feel, sisals are good for high traffic areas and come in solid and fleck tones.





Textured Carpet

Textured cut pile is the top-selling type of carpet on the market. Carpet pile is twisted and crimped to create a multi-colored look that hides footprints but retains its soft feel. Ideal for casual living spaces with moderate to heavy traffic.



Velvet or Plush Carpeting

Smooth, soft and elegant. Carpet pile is cut several times to create a luxurious, velvety sheen that shows every footprint. Ideal for formal areas such as living rooms







Base Board

A Narrow border that runs along the base of a wall where it meets the floor.



Jamb

The molding around the window



Fascia

A vertical board that covers the curtain

Revision made 05/30/2006 — A finish member around the face of eaves and roof projections. Horizontal boards attached to rafter/truss ends at the eaves and along gables. Roof drain gutters are attached to the fascia. Taken from HomeView Building Inspections, Inc. Building Definitions (www.homeview.bz/id31.html#F)



Molding

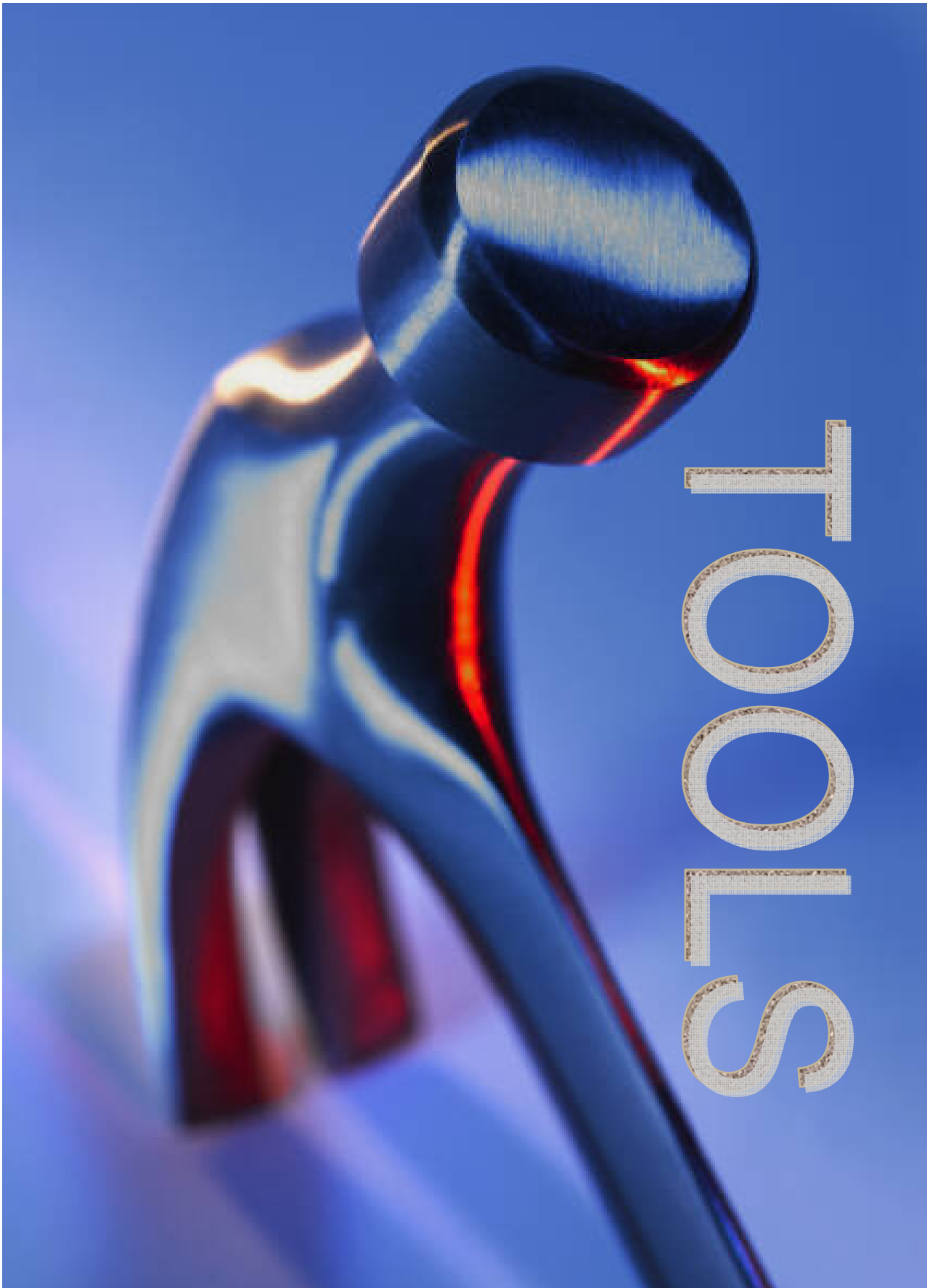
A decorative strip used for finishing woods



Chair Rail

An arm that is attached to a chair used to add style and support

Revision made 05/30/2006 — Chair rails have a decorative and practical function. Applied to a wall anywhere from 24 to 48 inches from the floor they are a beautiful accent to the room, running horizontally to form a wainscot look, while also protecting the wall from scuffs and dents from the backs of chairs. (www.burtonmoldings.com/chair.aspx)





Hammer

A hand tool that has a handle with a perpendicularly attached head of metal or other heavy rigid material, and is used for striking or pounding.

Level

An instrument for ascertaining whether a surface is horizontal, vertical, or at a 45 degree, consisting essentially of an encased, liquid-filled tube containing an air bubble that moves to a center window when the instrument is set on an even plane.



Pliers

A variously shaped hand tool having a pair of pivoted jaws, used for holding, bending, or cutting.

Screwdriver

A hand tool for driving screws; has a tip that fits into the head of a screw



PAINTING





Paint Brush

A brush for applying paint.
May come in different sizes
or shapes.

Roller

A device used for applying
paint consisting of a
cylinder attached to a
handle and a pad which fits
over the cylinder.



Pad Applicator

Small pad with a handle on the back that is used
to apply paint.

Faux Finishes and Techniques



Color Washing

Produces a casual appearance with a translucent texture. By using different color palettes with this versatile technique, you can give your room a fluid calm or the Old World charm of an aged fresco.

Combing

A fun technique that creates a striated effect with paint and glaze. Traditionally produces vertical lines that mimic the sheen of opulent silk. But can also be used to create waves, horizontal stripes, or checkered patterns for a more striking impression.



Crackle

A finish that when used with a combination of traditional colors can easily create an aged antique appearance.





Metallic

A finish which adds an opulent shimmer to a room. This special finish makes a bold, stylish statement when applied over a single basecoat, and adds elegant reflective highlights when used in combination with another faux finishing



Ragging

This finish produces a delicate, fabric-like texture with a soft, variegated appearance. It's the perfect way to create an intimate mood.



Sand Scape

This finish gives walls a rich, granulated texture that is as beautiful as it is dramatic. Suggesting the earthen color of sandstone cliffs, it brings the feel of nature into your home.



Soft Suede

This finish allows you to skillfully achieve the velvety suppleness of a well-worn suede jacket. The comfortable and relaxed atmosphere created by this effect works well with rich wood trim and furnishings.



Sponging

This technique adds a subtle texture and rich depth to your walls using a basic technique. By adding multiple layers of color in a random pattern, you build intricate dimension that lends visual interest to your home.